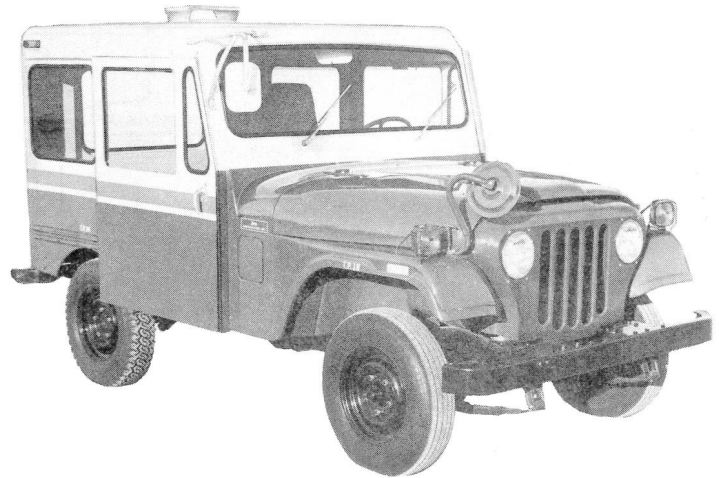


**Jeep DJ5-C  
DISPATCHER 100  
GVWR 3150 LBS.  
WHEELBASE 81"**



**GENERAL VEHICLE CHARACTERISTICS**

**CURB WEIGHT, LESS PAYLOAD AND CREW:**

Front Axle	1200 Lbs.
Rear Axle	1250 Lbs.
<b>TOTAL</b>	<b>2450 Lbs.</b>

**PAYLOAD: (Incl. Operator)**

Highway	700 Lbs.
---------	----------

**SHIPPING DIMENSIONS:**

Cu. Ft.	400
Sq. Ft.	65
<b>LENGTH:</b>	<b>133.0 In.</b>
<b>WIDTH:</b>	<b>70.62 In.</b>
<b>HEIGHT:</b>	<b>73.75 In.</b>
<b>WHEELBASE:</b>	<b>81 In.</b>

**TREAD:**

Front	51.5 In.
Rear	50.0 In.

**MINIMUM GROUND CLEARANCE:**

Under Axle (Rear)	6.7 In.
Under Chassis	6.75 In.

**ANGLE OF APPROACH:**

	43 Deg.
--	---------

**ANGLE OF DEPARTURE:**

	25 Deg.
--	---------

**VEHICLE CLEARANCE CIRCLE:**

Left Turn	36 Ft.
Right Turn	36 Ft.

**ENGINE: Model 6-232**

Type: 6 Cylinder, In-Line Gasoline  
 Displacement 232 Bore and Stroke 3.75 x 3.50  
 Compression Ratio 8:1 Fuel: Gasoline  
 Fuel Capacity: 11 Gals.  
 Horsepower: Max. Gross 115 at 4000 RPM  
 Max. Net 98 at 3600 RPM  
 Torque: Max. Gross 192 Lb. Ft. at 2000 RPM  
 Max. Net 184 Lb. Ft. at 1800 RPM  
 Lubrication: Pressure to Main and Rod Bearings,  
 Valve Rockers and Timing Gears, Etc.  
 Crankcase Capacity: 4 Qts. (With Filter 5 Qts.)  
 Governor: N.A.  
 Cooling System Capacity: 11.5 Qts. Pump Drive  
 Drive: One "V" Belt

**FUEL SYSTEM: Single Throat Downdraft Carburetor,  
Mechanical Fuel Pump**

**TORQUE CONVERTOR: 3 Element 2.10:1  
Torque Ratio at 2100 RPM**

**TRANSMISSION: Automatic 3 Speed**

Ratios: LOW, 2.39:1 x Torque Converter  
 INTERMEDIATE, 1.45:1 x Torque Converter  
 HIGH, 1.0:1 x Torque Converter

Lubricant Capacity: 10.5 Qts. With Oil Cooler

**AXLES: Front: Type: Reverse Elliot Rectangular Tube, Load Rating:  
2000 Lbs.**

Rear: Type: Semi Floating, Limited Slip Differential Flanged  
Shafts

Ratio: 3.07:1. Load Rating: 3500 Lbs.

Lub. Cap.: 1.25 Qts.

**FRAME: Type: Rail - Boxed Side Members**

Dimensions: 4.12 x 1.938 x .1495

Section Modulus: 1.821

No. of Crossmembers: 4 Plus Front & Rear Bumper Bar

**FRONT SPRINGS: Size: 1.75 In. Wide, 39.62 In. Long-Semi Elliptical**

No. Leaves: 5 Rate: 230 Lb./In.

**REAR SPRINGS: Size: 2.5 In. Wide 42.94 In. Long-Semi Elliptical**

No. Leaves: 4 Rate 200 Lb./In.

**SHOCK ABSORBERS: Front & Rear, Direct - Double Action**

No. Required: Four (4)

**WHEELS: Type: Safety Rim - Disc Diameter: 14 x 4.5 "J"**

**TIRES: Size: 6.95 x 14 Front and Rear, Load Range "B"**

Tread Design: Std. Front, Mud & Snow Rear

**STEERING: Type: Worm & Roller**

Ratio: 24:1

**BRAKES, SERVICE: Type: Hydraulic Internal Expanding**

Drum Size: Front: 10 In. Dia. x 2 In. Wide

Rear: 10 In. Dia. x 2 In. Wide

Total Effective Area: Front: 87 Sq. In.

Rear: 87 Sq. In.

**BRAKES, PARKING: Type: Internal - Rear Wheels**

**ELECTRICAL SYSTEM: Radio Suppressed**

Potential: 12 Volt Alternator 37 AMP

Battery Number: One (1), 70 AMP Hr.

**PERFORMANCE: Cruising Range: 150 Miles**

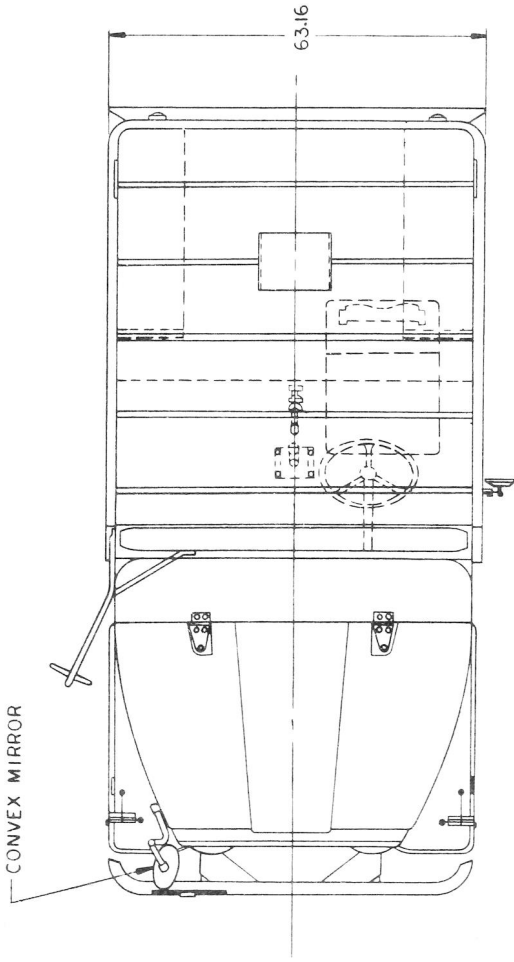
Maximum Speed: 60 MPH

**BODY: Type: Closed, 2 Sliding Doors With Rear Door**

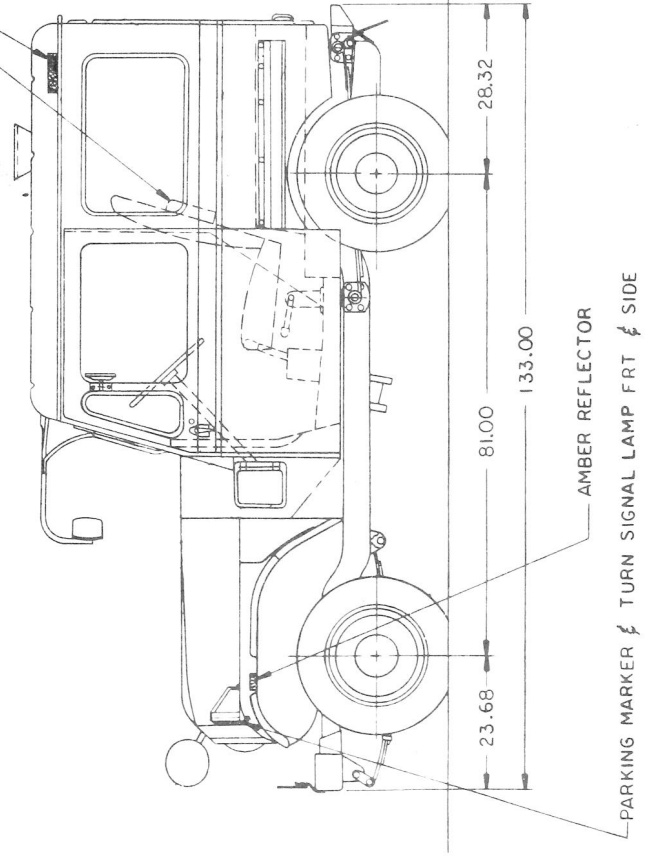
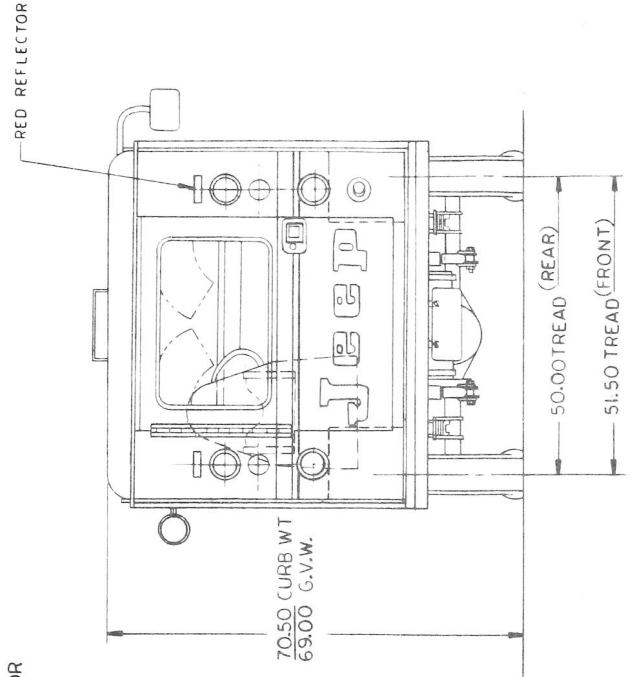
PRODUCED BY

**Jeep Corporation**

**Jeep DJ5-C**  
**DISPATCHER 100**  
**GVWR 3150 LBS.**  
**WHEELBASE 81"**  
**LEFT & RIGHT HAND DRIVE**



STORAGE COMPARTMENT 9X12X2  
 RED LIGHT & REFLECTOR



PARKING MARKER & TURN SIGNAL LAMP FRT SIDE